

NAREX WIDE UPDATE REPORT OCTOBER 2016

Author and responsible person: Prof. Dr. Konstantin Lenz
Country Manager Commodities Germany
Konstantin.Lenz@nasdaq.com
Phone: +49 177 328 85 28

Index Version: NAREX WIDE 16/10
Changes coming in effect: October 1st, 2016
Report Version: 16/10/1.0
Date of Issue: December 1st, 2016
Index Provider: Meteogroup

Summary

On October 1st, 2016, the NAREX WIDE (NAsdaq REnewable index WInd (DE) Germany) was adjusted to the last available capacity and wind installation data with the Version 16/10 replacing index version 16/04. The total installed capacity increased by 2149.8 MW or 4.78%. The relation of offshore capacity on the total installed capacity rose slightly from 7.33% to 7.46%. A higher share of wind production capacity in Southern Germany caused a slightly lower normal utilization.

Parameters:

Total installed wind power capacity:	47096.220 MW
Change to previous index version 16/04:	+ 2149.8 MW (+4.78%)
Total installed onshore capacity:	43543.70 MW (92.46%)
Change to previous index version 16/04:	+ 1892.2 MW
Total installed offshore capacity:	3552.22 MW (7.54%)
Change to previous index version 16/04:	+ 257.3 MW

Onshore / Offshore Relation 16/10: 92.46% / 7.46%
Onshore / Offshore Relation 16/04: 92.67% / 7.33%

Source of Data: Bundesverband Windenergie e.V. / Deutsche Windguard
Link: <https://www.wind-energie.de/themen/statistiken>

Statistical properties:

Yearly Average (2006 to 2015) version 16/10: 21.38 %
Yearly Average (2006 to 2015) version 16/04: 21.44 %

Source of Data: Meteogroup reanalysed dat set

Geographical Distribution:

Region	Capacity [MW] 16/10	Capacity [MW] 16/4	Growth [MW]	Growth [%]	Share [%] 16/10	Share [%] 16/04
Offshore	3552	3295	257	7,8%	7,5%	7,3%
North	18348	17616	732	4,2%	39,0%	39,2%
East	13173	12789	384	3,0%	28,0%	28,5%
West	9076	8659	417	4,8%	19,3%	19,3%
South	2947	2587	360	13,9%	6,3%	5,8%

Regions:

Offshore: North Sea and Baltic Sea

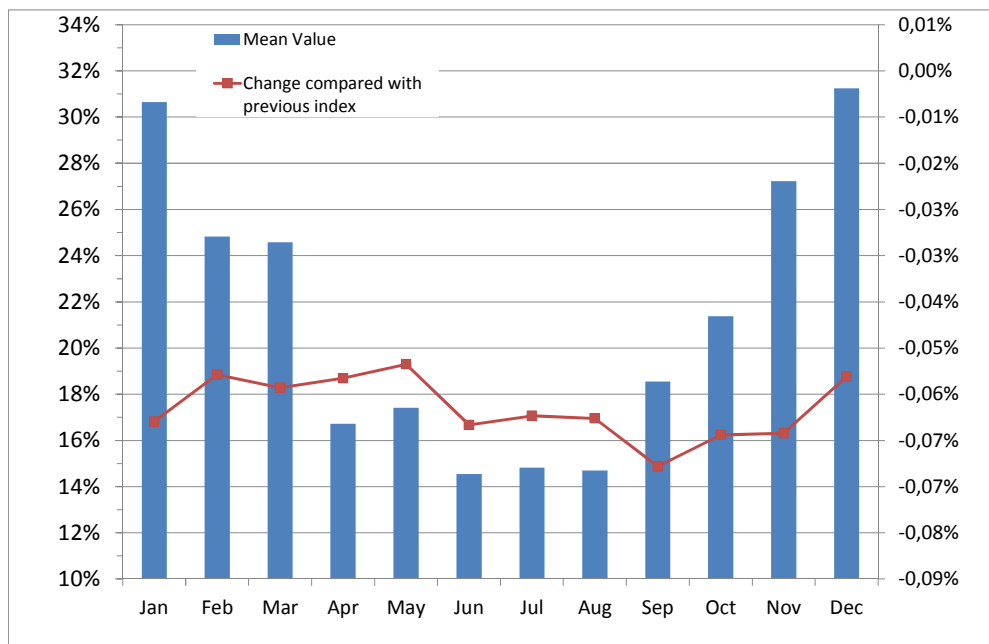
North: Lower Saxony, Schleswig-Holstein, Mecklenburg-Western Pomerania, Bremen, Hamburg

East: Brandenburg, Saxony Anhalt, Thuringia, Saxony, Berlin

West: North Rhine – Westfalia, Hessen, Rhineland-Palatinate, Saarland

South: Baden-Württemberg, Bavaria

Monthly Normals (Reference: 2006 to 2015):



Formula to convert index values 16/04 into index values 16/10:

$$Y=0,0000427374019126498x^2+0,994971785784633x+0,00745931705232448$$

$$RMS=0.08574$$