

## NAREX WIDE UPDATE REPORT APRIL 2017

**Author and responsible person:** Prof. Dr. Konstantin Lenz  
Country Manager Commodities Germany  
Konstantin.Lenz@nasdaq.com  
Phone: +49 177 328 85 28

**Index Version: NAREX WIDE 17/04**  
**Changes coming in effect: April 1<sup>st</sup>, 2017**  
**Report Version: 17/04/1.0**  
**Date of Issue: April 1<sup>st</sup>, 2017**  
**Index Provider: Meteogroup**

### Summary

On April 1<sup>st</sup>, 2017, the NAREX WIDE (NAsdaq REnewable indeX WInd (DE) Germany) was adjusted to the last reported capacity and wind installation data with the Version 17/04 replacing index version 16/10. The total installed capacity increased by 2923.1 MW or 6.21%. The relation of offshore capacity on the total installed capacity rose from 7.54% to 8.21%. The higher share of offshore wind installations causes an increase of the yearly average value.

### Parameters:

Total installed wind power capacity:	50018.97 MW
Change to previous index version 16/10:	+ 2923.07 MW (+6.21%)
Total installed onshore capacity:	45910.67 MW (91.79%)
Change to previous index version 16/10:	+ 2366.97 MW
Total installed offshore capacity:	4108.3 MW (8.21%)
Change to previous index version 16/10:	+ 556.1 MW

Onshore / Offshore Relation 17/04: 91.79% / 8.21%  
Onshore / Offshore Relation 16/10: 92.46% / 7.54%

*Source of Data: Bundesverband Windenergie e.V. / Deutsche Windguard*  
*Link: <https://www.wind-energie.de/themen/statistiken>*

### Statistical properties:

Yearly Average (2006 to 2015) version 17/04: 21.62 %  
Yearly Average (2006 to 2015) version 16/10: 21.38 %

*Source of Data: Meteogroup reanalysed dataset*

## Geographical Distribution:

Region	Capacity [MW] 17/04	Capacity [MW] 16/10	Growth [MW]	Growth [%]	Share [%] 17/04	Share [%] 16/10
Offshore	4108	3552	556	15,6%	8,2%	7,5%
North	19110	18348	762	4,2%	38,2%	39,0%
East	13752	13173	579	4,4%	27,5%	28,0%
West	9776	9076	700	7,7%	19,5%	19,3%
South	3274	2947	327	11,1%	6,5%	6,3%

### Regions:

Offshore: North Sea and Baltic Sea

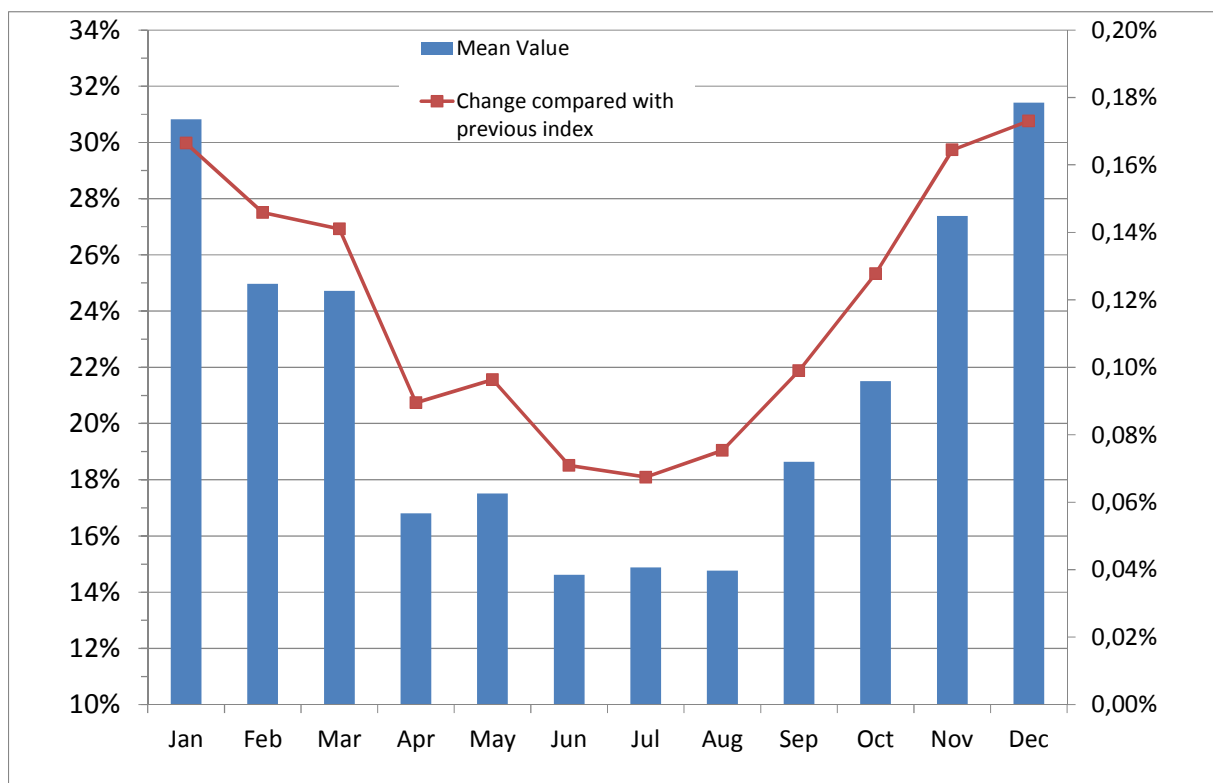
North: Lower Saxony, Schleswig-Holstein, Mecklenburg-Western Pomerania, Bremen, Hamburg

East: Brandenburg, Saxony Anhalt, Thuringia, Saxony, Berlin

West: North Rhine – Westphalia, Hessen, Rhineland-Palatinate, Saarland

South: Baden-Württemberg, Bavaria

## Monthly Normals (Reference: 2006 to 2015):



## Formula to convert index values 16/10 into index values 17/04:

$$Y=0,0000427374019126498x^2+1,00779838945851x+0,0603223678510066$$

RMS=0.1958