

## NAREX WIDE UPDATE REPORT OCTOBER 2017

**Author and responsible person:** Prof. Dr. Konstantin Lenz  
Country Manager Commodities Germany  
Konstantin.Lenz@nasdaq.com  
Phone: +49 177 328 85 28

**Index Version: NAREX WIDE 17/10**  
**Changes coming in effect: October 1<sup>st</sup>, 2017**  
**Report Version: 17/10/1.0**  
**Date of Issue: October 1<sup>st</sup>, 2017**  
**Index Provider: Meteogroup**

### Summary

On October 1<sup>st</sup>, 2017, the NAREX WIDE (NAsdaq REnewable indeX WInd (DE) Germany) was adjusted to the last reported capacity and wind installation data with the Version 17/10 replacing index version 17/04. The total installed capacity increased by 2752 MW or 5.5%. The relation of offshore capacity on the total installed capacity rose from 8.21% to 9.00%. The higher share of offshore wind installations causes an increase of the yearly average value.

### Parameters:

Total installed wind power capacity:	52772 MW
Change to previous index version 16/10:	+ 2752 MW (+5.50%)
Total installed onshore capacity:	48023 MW (91.00%)
Change to previous index version 16/10:	+ 2111 MW
Total installed offshore capacity:	4749 MW (9.00%)
Change to previous index version 16/10:	+ 641 MW

Onshore / Offshore Relation 17/10: 91.00% / 9.00%  
Onshore / Offshore Relation 17/04: 91.79% / 8.21%

*Source of Data: Bundesverband Windenergie e.V. / Deutsche Windguard*  
*Link: <https://www.wind-energie.de/themen/statistiken>*

### Statistical properties:

Yearly Average (2006 to 2015) version 17/10: 22.35 %  
Yearly Average (2006 to 2015) version 17/04: 21.62 %

*Source of Data: Meteogroup reanalysed dataset*

### Geographical Distribution:

Region	Capacity [MW] 17/04	Capacity [MW] 16/10	Growth [MW]	Growth [%]	Share [%] 17/04	Share [%] 16/10
Offshore	4749	4108	641	15,6%	9,0%	8,2%
North	19933	19110	823	4,3%	37,8%	38,2%
East	14114	13752	362	2,6%	26,7%	27,5%
West	10401	9776	625	6,4%	19,7%	19,5%
South	3575	3274	301	9,2%	6,8%	6,5%

#### Regions:

Offshore: North Sea and Baltic Sea

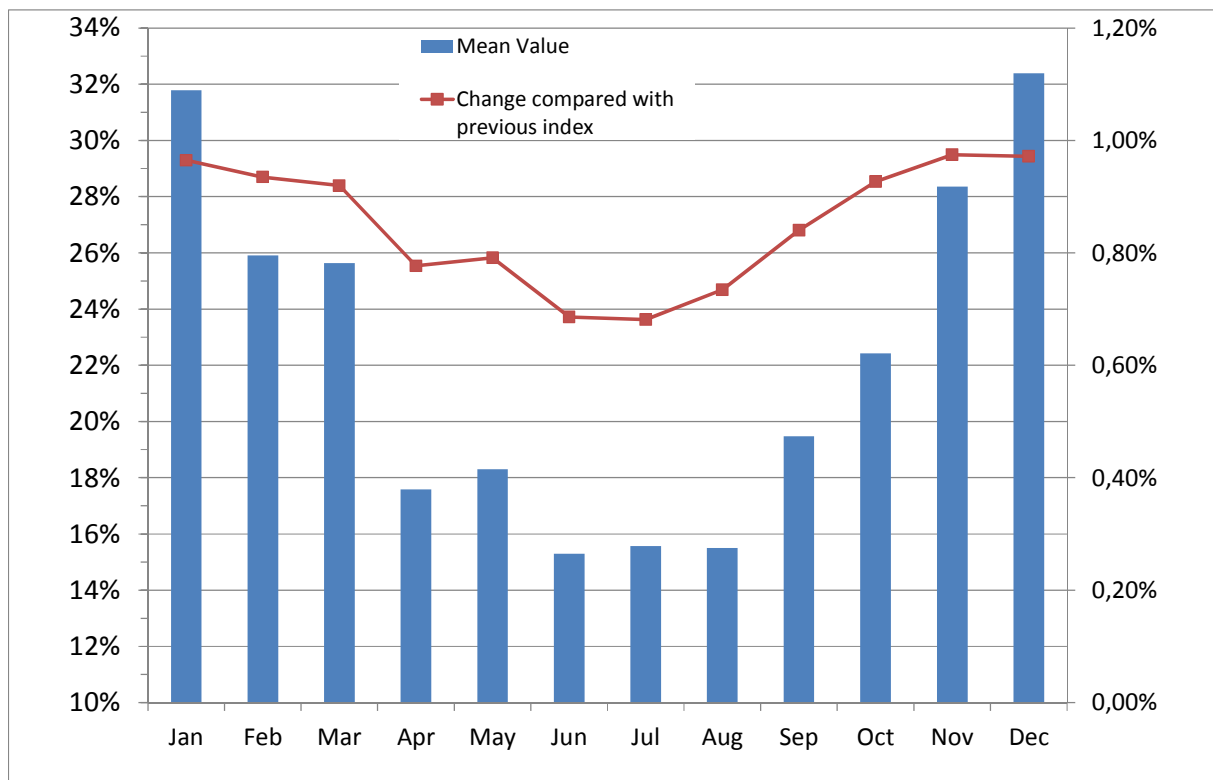
North: Lower Saxony, Schleswig-Holstein, Mecklenburg-Western Pomerania, Bremen, Hamburg

East: Brandenburg, Saxony Anhalt, Thuringia, Saxony, Berlin

West: North Rhine – Westphalia, Hessen, Rhineland-Palatinate, Saarland

South: Baden-Württemberg, Bavaria

### Monthly Normals (Reference: 2006 to 2015):



### Formula to convert index values 17/04 into index values 17/10:

$$Y = 6,56383478517682E-07x^2 + 0,000772144801486248x + 0,935501132083095$$

$$RMS = 0,276491641459224$$