

NAREX WIDE UPDATE REPORT APRIL 2018

Author and responsible person: Prof. Dr. Konstantin Lenz
Country Manager Commodities Germany
Konstantin.Lenz@nasdaq.com
Phone: +49 177 328 85 28

Index Version: NAREX WIDE 18/04
Changes coming in effect: April 1st, 2018
Report Version: 18/04/1.0
Date of Issue: April 1st, 2018
Index Provider: Meteogroup

Summary

On April 1st, 2018, the NAREX WIDE (NAsdaq REnewable indeX WInd (DE) Germany) was adjusted to the last reported capacity and wind installation data with the Version 18/04 replacing index version 17/10. The total installed capacity increased by 3391 MW or 6.4%. The relation of offshore capacity on the total installed capacity rose from 9.00% to 9.59%. The higher share of offshore wind installations causes an increase of the yearly average value.

Parameters:

Total installed wind power capacity: 56163 MW
Change to previous index version 17/10: + 3391 MW (+6.43%)

Total installed onshore capacity: 50776 MW (90.41%)
Change to previous index version 17/10: + 2753 MW

Total installed offshore capacity: 5387 MW (9.59%)
Change to previous index version 17/10: + 638 MW

Onshore / Offshore Relation 17/04: 90.41% / 9.59%
Onshore / Offshore Relation 17/10: 91.00% / 9.00%

Source of Data: Bundesverband Windenergie e.V. / Deutsche Windguard
Link: <https://www.wind-energie.de/themen/statistiken>

Statistical properties:

Yearly Average (2006 to 2015) version 18/04: 22.79 %
Yearly Average (2006 to 2015) version 17/10: 22.35 %

Source of Data: Meteogroup reanalysed dataset

Geographical Distribution:

Region	Capacity [MW] 18/04	Capacity [MW] 17/10	Growth [MW]	Growth [%]	Share [%] 18/04	Share [%] 17/10
Offshore	5387	4749	638	13,4%	9,6%	9,0%
North	21000	19933	1067	5,4%	37,4%	37,8%
East	14924	14114	810	5,7%	26,6%	26,7%
West	10917	10401	516	5,0%	19,4%	19,7%
South	3935	3575	360	10,1%	7,0%	6,8%

Regions:

Offshore: North Sea and Baltic Sea

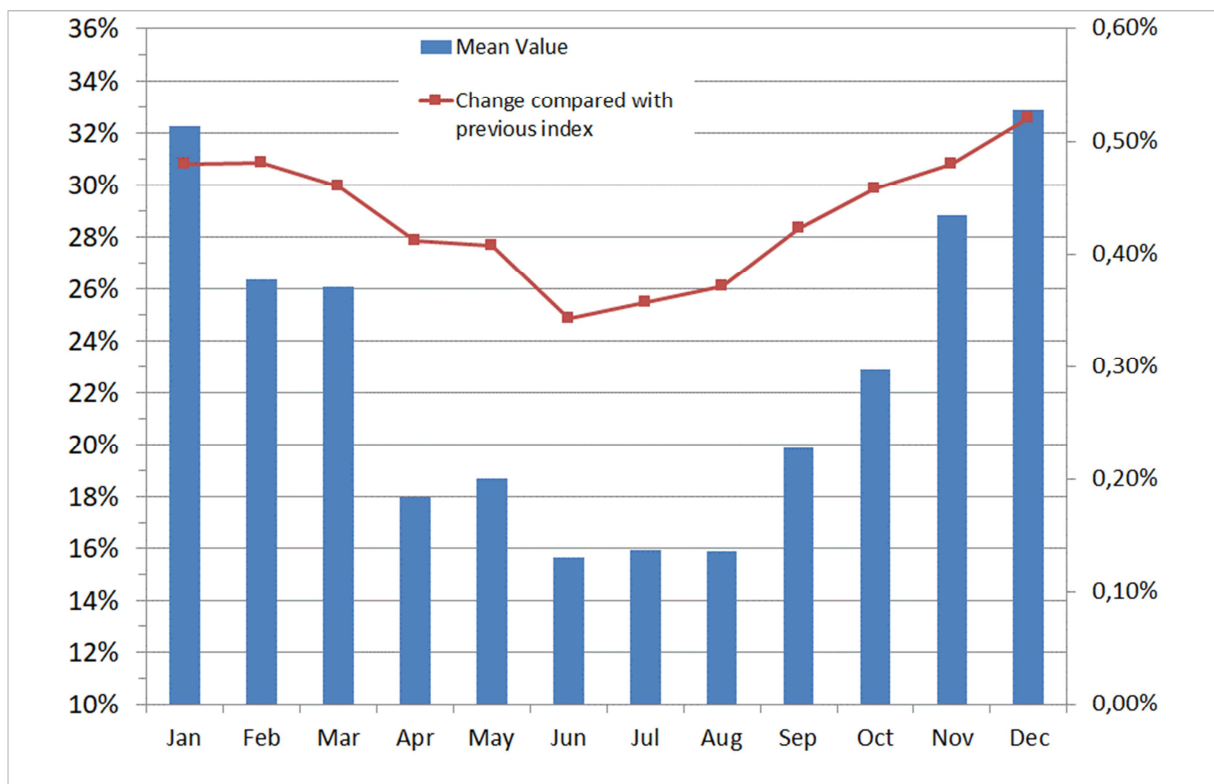
North: Lower Saxony, Schleswig-Holstein, Mecklenburg-Western Pomerania, Bremen, Hamburg

East: Brandenburg, Saxony Anhalt, Thuringia, Saxony, Berlin

West: North Rhine – Westphalia, Hessen, Rhineland-Palatinate, Saarland

South: Baden-Württemberg, Bavaria

Monthly Normals (Reference: 2006 to 2015):



Formula to convert index values 17/10 into index values 18/04:

$$Y = 0,000396956957947468x^2 + 0,966248206731479x$$

$$RMS = 0,18796265$$

Hourly index value conversion file available on request. Please contact konstantin.lenz@nasdaq.com